

Bronte Farmhouse

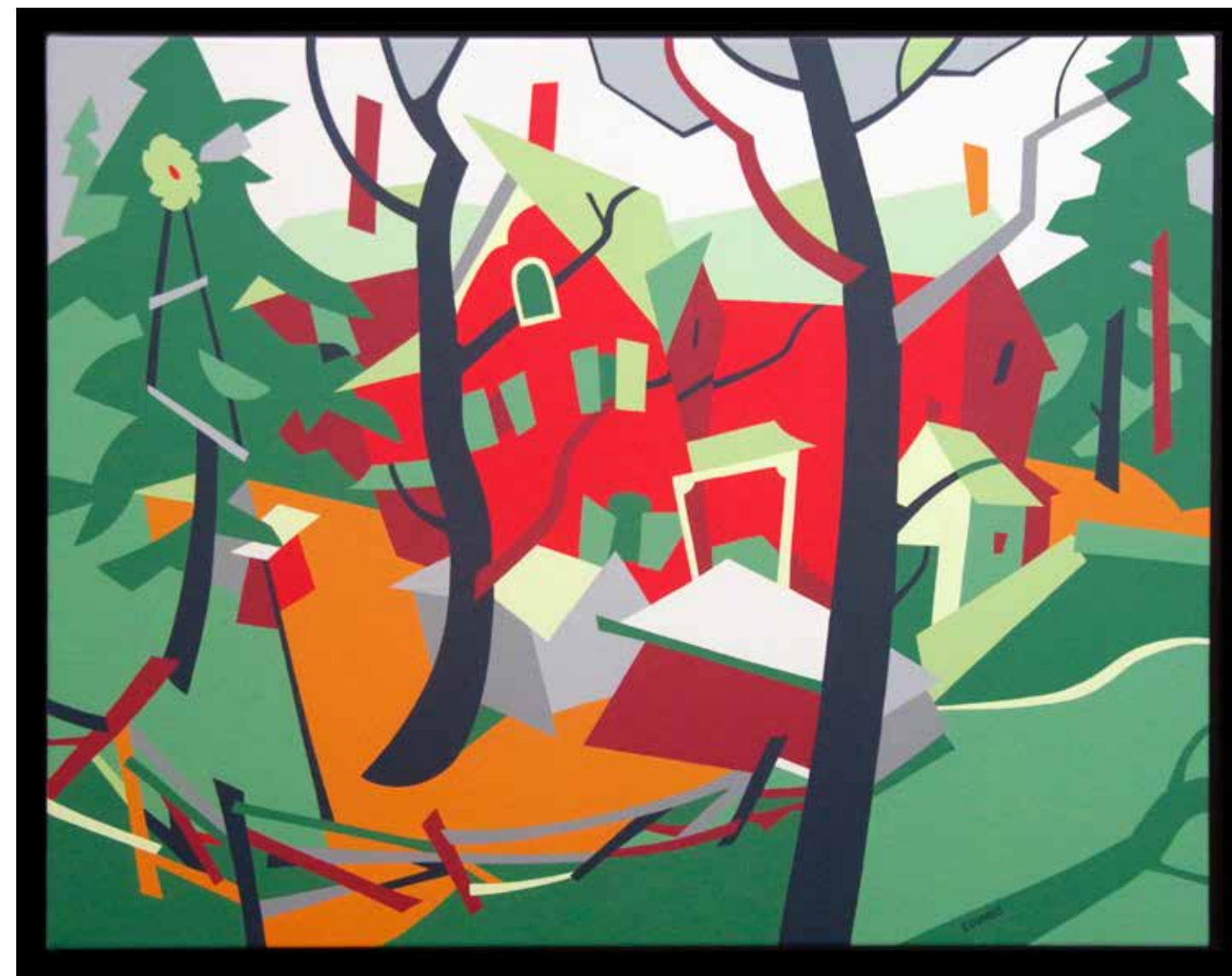
by Norman Brown

out Bronte Road
a farmhouse abandoned
boarded up plywood
over broken windows
haphazard brick red jumble
a side porch slumps
exhausted against the wall
rusted metal windmill
and pump-house
mated to a dry well

in the gallery
a farmhouse fresh
as the smell of milled soap
in a kitchen sink
joyful as the summer day is long
as the newest calf
in coltish caper
its garden glowing golden
under a never fading sun

...poem inspired by...

Bronte Farm House (artist Barry Coombs)



Bronte Farm House

© Barry Coombs